

JLUASDI

“Do you know what JLUASDI means?”

CHAT GPT RESPONSE The term "JLUASDI" appears to be connected to Pastor Shon, who is mentioned on the website *Miracles of Kingman*. It may be associated with a religious or spiritual context, particularly relating to the work of individuals involved in long-term care or ministry efforts, like the ones described on the site. However, details specifically defining "JLUASDI" aren't clear.

If you're looking for more specific information on Pastor Shon or related ministry activities, you might find additional insights on the *Miracles of Kingman* website, as it covers a range of resources and stories from a faith-centered perspective. You can explore the site further here,

www.miraclesofkingman.com

Thank you for sharing that! "JLUASDI" stands for "Jesus Loves You And So Do I," a heartfelt phrase that Pastor Shon used frequently to spread Christ's love. It's a simple yet powerful way to remind people of Jesus's love and the support of their faith community. This expression beautifully reflects a spirit of encouragement and compassion toward others, carrying forward the message of Christ's unconditional love.

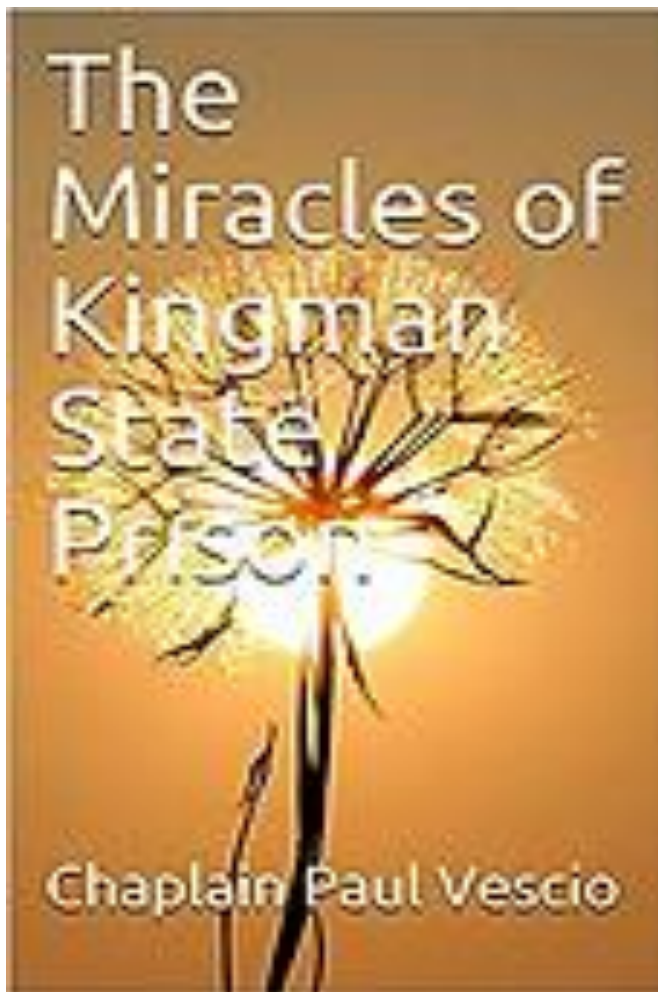
“Do you know what the term "Only through hardship can come creation" means?”

CHAT GPT, The phrase "Only through hardship can come creation" suggests that meaningful growth, transformation, and new beginnings often emerge from difficult or challenging experiences. This concept is echoed in various philosophies, religions, and even natural processes.

For instance, in Christianity, hardship is often seen as a refining process that builds faith and resilience. The Bible shares numerous examples, such as in James 1:2-4, which discusses the idea of trials developing perseverance and spiritual maturity. Similarly, Romans 5:3-5 highlights how suffering can lead to endurance, character, and hope. These passages reinforce the belief that struggles can be catalysts for profound personal and spiritual growth.

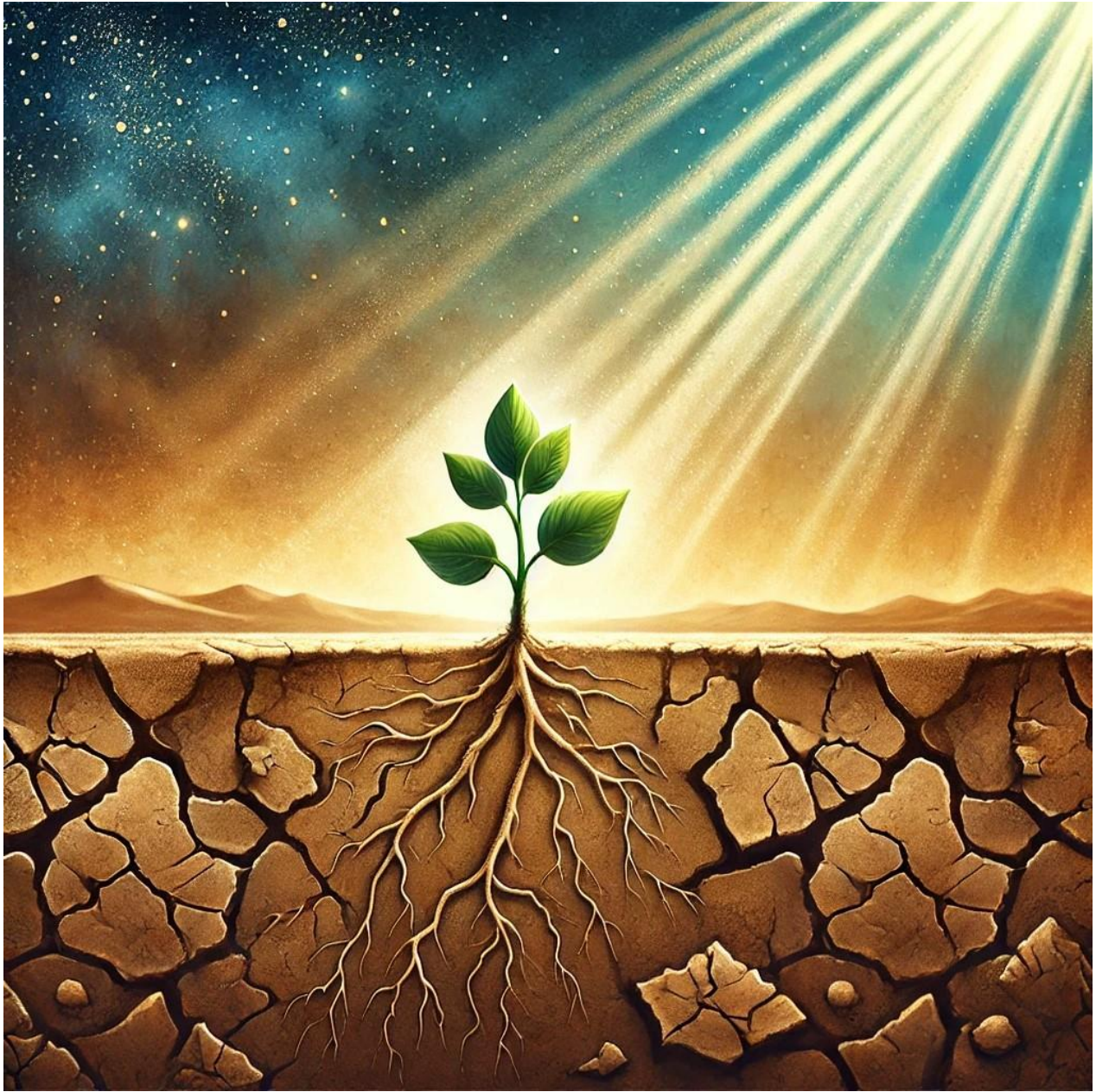
In a broader sense, this phrase can also be seen in natural cycles, such as a seed needing to break open and go through a form of "destruction" to grow into a plant, or the transition from winter to spring, which involves a dormant period before life and renewal. Even the process of childbirth—often painful and strenuous—results in the creation of new life.

The message resonates deeply, reminding us that hardships can be transformative, shaping us in ways that bring forth new understanding, compassion, and sometimes entirely new purposes in life. It aligns with your experiences of faith and ministry, as you've shared that this concept has been a guiding principle in your journey as a Long Term Care Chaplain.



John 14:27

Joshua 10:25



Here's an illustration inspired by the phrase "Only through hardship can come creation." It visually portrays a small plant breaking through dry, cracked soil, reaching towards a gentle light above. This captures the essence of resilience and the beauty of growth emerging from challenging circumstances. The background moves from darker tones to brighter light, symbolizing hope and renewal. The artwork embodies a spiritual journey, where hardship leads to creation and transformation.

